

OPERATING CONDITIONS

NORMAL ----- 8,066 HP [6,015 kW] @ 12,735 RPM
 DRIVER RATED ----- 8,873 HP [6,617 kW] @ 12,735 RPM
 NORMAL TORQUE ----- 39,919 IN-LB [4,510 N-m]
 DRIVER RATED TORQUE ----- 43,917 IN-LB [4,962 N-m]
 MIN/MAX CONTINUOUS SPEED ----- 9,227/13,841 RPM
 TRIP SPEED ----- 15,225 RPM
 SELECTION TORQUE ----- 76,851 IN-LB [8,663 N-m]
 (INCLUDES 1.75 S.F. ON DRIVER RATED TORQUE)

COUPLING RATING

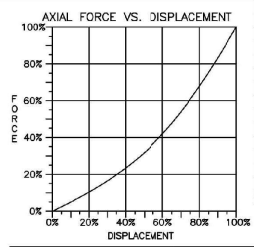
MAX CONTINUOUS TORQUE ----- 65,000 IN-LB [9,603 N-m]
 PEAK TORQUE ----- 102,000 IN-LB [11,524 N-m]
 MAX MOMENTARY TORQUE ----- 135,000 IN-LB [15,252 N-m]
 API 671 RATED SPEED ----- 16,900 RPM

HUB/SHAFT INFORMATION	
TORQUE CAPACITY (BASED ON MU = 0.15)	106,100 IN-LB [11,987 N-m]
REQUIRED MOUNT AND DISMOUNT PRESSURE	26,700 PSI [184,000 kPa]
MAX ALLOWABLE ASSEMBLY PRESSURE	34,400 PSI [2,371,800 kPa]

MASS ELASTIC DATA

COMPONENT WEIGHT

COMPONENT	DRIVING	DRIVEN
HUB (BORED, INCL. 1/2 DISC PACK)	11 LB [5.0 kg]	11 LB [5.0 kg]
ADAPTER / SLEEVE (INCL. 1/2 DISC PACK)	6 LB [2.7 kg]	11 LB [5.0 kg]
SPACER (INCL. 1/2 DRIVING DISC PACK)	21 LB [9.5 kg]	
TOTAL COUPLING WEIGHT (BORED)	49 LB [22.2 kg]	
MOMENT OF INERTIA (WR ²)	39C LB-IN ² [0.11 kg-m ²]	
TORSIONAL STIFFNESS (BASED ON 1/3 SHAFT PENETRATION)	2.6 x 10 ⁶ IN-LB/RAD [C.29 x 10 ⁶ N-m/RAD]	
DISC PACK ANGULAR STIFFNESS	93C IN-LB/DEG [105 N-m/DEG]	
LATERAL CRITICAL SPEED (SIMPLY SUPPORTED TUBE)	30,50C RPM	
MISALIGNMENT: MAX CONTINUOUS	0.20 DEG	±.170 [4.32]
NOTE: TRANSIENT AXIAL MISALIGNMENT CAN BE 133% OF MAX CONTINUOUS		
DISC PACK @ TO @ DISTANCE		32.6 [833]
EQUIVALENT PARALLEL OFFSET		.114 [2.89]



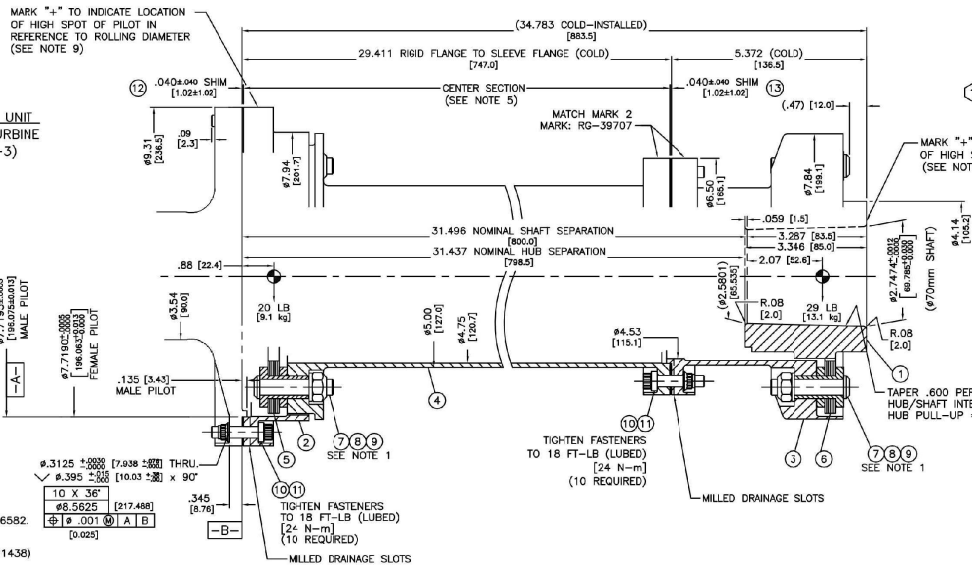
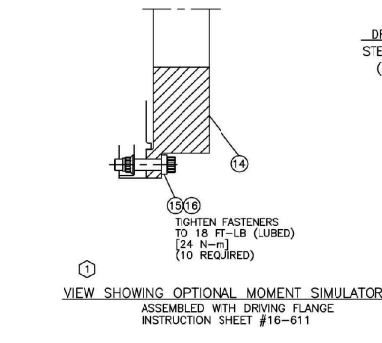
PRODUCTION DRAWINGS

DRAWING NO.	DESCRIPTION
CC68833	HUB, DRIVEN
CC68833	DISC PACK (MS)
CC68331	DISC PACK, A/W
1146055	DISC, A/W
1156580	ASSEMBLY DWG (MS)
1156581	ASSEMBLY DWG (RM)
CA91438	HIGH SEN. BAL.
ES-029-BL	BALANCE SPEC
ES-019-BL	BALANCE SPEC
1156582	EXCEPTIONS
1156583	MASKING DWG
ES-122-ST	COATING SPEC.
1156575	FLG/HWWARE DETAIL

DO WHAT YOU SAY

LIST OF MATERIAL AND DRAWINGS FOR ONE COUPLING

QTY	PART NO.	PART DESCRIPTION	MATERIAL	WK NO.
1	1156590	HUB, DRIVEN	ALSI 4340 HT	1
1	1156576	DRIVING ADAPTER	TITANIUM	2
1	1156577	DRIVEN SLEEVE	ALSI 4140 HT	3
1	1156578	SPACER	ALSI 4140 HT	4
1	CX99662	DISC PACK ASSEMBLY	301 STAINLESS STL	5
1	CX99667	DISC PACK ASSEMBLY	301 STAINLESS STL	6
12	FX14148	7/16-20 NF x 2.00 CAPS	ALLOY STEEL	7
12	WAB2243	7/16-20 NF LOCKNUT	STEEL	8
12	WAB2243	7/16 HARDENED WASHER	ALLOY STEEL	9
22	WAB2221	5/16-24 NF x 1.30 CAPS	ALLOY STEEL	10
22	WAB2022	5/16-24 NF LOCKNUT	ALLOY STEEL	11
1	FX10134-SS	.080 SHIM PACK	STAINLESS STEEL	12
1	1156579-SS	.080 SHIM PACK	STAINLESS STEEL	13
1	1156734	MOMENT SIMULATOR	ALLOY STEEL	14
12	WAB2221	5/16-24 NF x 1.30 CAPS	ALLOY STEEL	15
12	WAB2022	5/16-24 NF LOCKNUT	ALLOY STEEL	16
1	1154790	RING & PLUG GAGE SET	STEEL	17
22	WAB2022	5/16-24 NF LOCKNUT	ALLOY STEEL	18
6	WAB0736	1/4-28 NF x 0.58 SHCS	ALLOY STEEL	19
6	WAB1375	3/8-24 NF x 0.75 S.S.	ALLOY STEEL	20



- NOTES:**
- KOP-FLEX DISC COUPLINGS ARE PROVIDED AS FACTORY ASSEMBLED UNITS. WARNING: DO NOT TIGHTEN OR LOOSEN DISC BOLTS AND NUTS.
 - COUPLING IS DESIGNED IN ACCORDANCE WITH API 671 AND APPLICABLE RG SPECIFICATION WITH COMMENTS AND EXCEPTIONS PER KOP-FLEX FORM #1156582.
 - COUPLING TO BE DYNAMICALLY BALANCED PER API 671. (COMPONENT BALANCE AND ASSEMBLY BALANCE WITH REPEATABILITY PER CA91438)
 - INDICATES EFFECTIVE CENTER OF GRAVITY OF HALF COUPLING.
 - CENTER SECTION IS DESIGNED TO STRETCH FLEXIBLE ELEMENTS AT INSTALLATION. NOMINAL CENTER SECTION FREE LENGTH (UNSTRETCHED) = 29.237 [742.82] SHIM AS REQUIRED TO OBTAIN PRESTRETCH VALUE OF .094 [2.4] NORMAL: AXIAL GROWTH (.094 [2.4]) - PRESTRETCH (.094 [2.4]) = RUNNING NEUTRAL START-UP: AXIAL GROWTH (.130 [3.3]) - PRESTRETCH (.094 [2.4]) = RUNNING COMPRESSED (.036 [0.9]) SHUT-DOWN: AXIAL GROWTH (-0.075 [-1.9]) - PRESTRETCH (.094 [2.4]) = RUNNING STRETCHED (-.169 [4.3])
 - TRIM BALANCE/JACKING HOLES SUPPLIED IN DRIVING ADAPTER FLANGE (QTY 10 - 5/16-24 NF TAPPED HOLES ON A #8.363 [217.49] BOLT CIRCLE). TRIM BALANCE/JACKING HOLES SUPPLIED IN DRIVEN SPACER FLANGE (QTY 10 - 5/16-24 NF TAPPED HOLES ON A #6.750 [148.05] BOLT CIRCLE). TRIM BALANCE HOLES MAY ALSO BE USED FOR JACKING.
 - DRIVEN HUB BORE PER NUOVO PIGNONE ITW 92391.02 Rev. 02
 - ANTI-WINDAGE RM DISC PACK IS USED IN DESIGN.
 - THE VALUE NEEDS TO BE GIVEN IN THE BALANCE REPORT.
 - ALL MAJOR COMPONENTS, EXCEPT DRIVING ADAPTER, DISC PACKS AND HARDWARE TO BE ZINC PHOSPHATE COATED PER ES-122-ST.

- QUANTITY INCLUDES AN ADDITIONAL 10%
- QUANTITY INDICATES SPARE SET FOR MINIMUM REQUIREMENT OF 20 MOUNT/DISMOUNT OCCURRENCES.
- INDICATES SHIPPING SCREWS NOT SHOWN.
- SHIPPING SCREWS - YELLOW COLLAPSING CAPSCREWS RED LOCKING SETSCREWS
- NOTE: ALL SHIPPING SCREWS MUST BE REMOVED AT FINAL ASSEMBLY. (SEE INSTALLATION INSTRUCTION 16-616)
- INDICATES ITEM NOT PART OF THE COUPLING STRUCTURE AND IS SUPPLIED ONLY WHEN REQUESTED BY CUSTOMER.
- INDICATES PART NOT SHOWN.

DRIVEN UNIT
CENTRIFUGAL COMPRESSOR
(BCL356/A)

REG-39707

JOB # 1'05124

CUSTOMER: NUOVO PIGNONE

INQUIRY NO. _____ BAL NO. 8593599

CUSTOMER'S ORDER NO. - 440061542 / 440061523

KOP-FLEX'S CP - 8657349 / 8657350

QUANTITY - (1) COUPLING / (1) COUPLING

(1) MOMENT SM. & HDW (MK#14-15); (1) RING & PLUG GAGE (MK#17)

REVISION	DATE	BY	CHK	APPR
1	EDN15-0855; ADDED MOMENT SIMULATOR	JEK	W/MS	UCP
2	MK#14 THRU 17; AND VIEW.			

EMERSON Industrial Automation

ISO 9001

1156575

GE/GEs	TITLE: DRIVING COUPLING BETWEEN ST AND BCL356/A	DOCUMENT CODE: SOL3344943	REVISION: 2
REVISION DESCRIPTION:	ASSEMBLY DRAWING	DATE: 26-Jan-2016	SECURITY CODE: N
REVISED ACCORDING TO CUSTOMER COMMENTS		BY: [Signature]	LANGUAGE: ENGLISH
DATE: 21-Sep-2015	BY: [Signature]	DATE: 21-Sep-2015	SHEET: 1 OF 1

Electronically Approved Drawing-Checked: Donati D., Approved: Di Gregorio A.-Internal DT-'N'