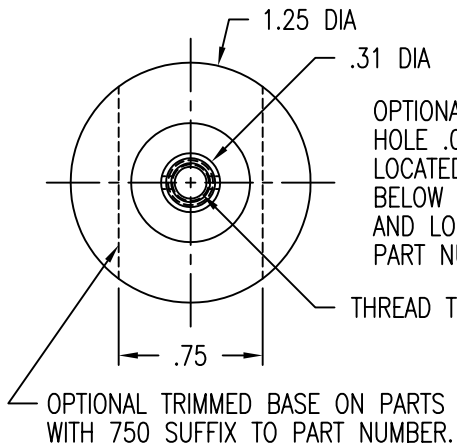
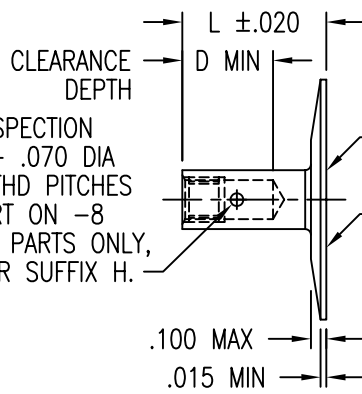


STANDOFF STRAIGHT WITHIN .004 INCH PER INCH OF LENGTH.
 PITCH DIAMETER CONCENTRIC WITH BASE O.D. WITHIN .020 FIM.
 PITCH DIAMETER PERPENDICULAR TO BASE WITHIN ±1 DEG.

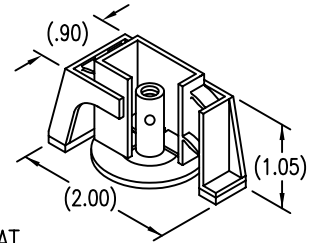
DISPOSABLE PRESSURE SENSITIVE ADHESIVE
 FIXTURE HOLDS STANDOFF WHILE ADHESIVE CURES.



OPTIONAL INSPECTION HOLE .062 - .070 DIA LOCATED 2 THD PITCHES BELOW INSERT ON -8 AND LONGER PARTS ONLY, PART NUMBER SUFFIX H.



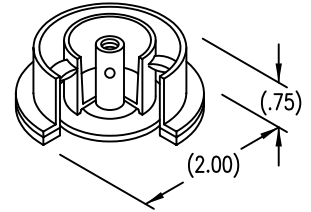
STANDARD FIXTURE



OPTIONAL PRIMER THIS SURFACE.

BASE SURFACE FLAT WITHIN .010 FIM.

FOR OPTIONAL ROUND FIXTURE ADD SUFFIX R TO PART NUMBER



LENGTH L DATA (LENGTH L IN SIXTEENTHS OF AN INCH)

CODE	6	7	8	9	10	11	12	13	14	15	16	17	18	20	22	24
L	.375	.437	.500	.562	.625	.687	.750	.812	.875	.937	1.000	1.062	1.125	1.250	1.375	1.500
D MIN	.295		.400		.472											

STANDOFF MATERIAL AND FINISH DATA

CODE	STANDOFF MATERIAL	SPEC.	FINISH	SPEC.
A	2024 OR 6061	QQ-A-200, QQ-A-225, OR QQ-A-250	NONE	
AA	ALUMINUM		ANODIZE	MIL-A-8625
CR	302, 303, 304 CRES OR A-286 CRES	AMS 5513, 5516, 5636, 5637, 5638, 5639, 5640, 5641, OR 5647 AMS 5525, 5726, 5731, 5732, 5734, OR 5737 (CHEMISTRY ONLY)	PASSIVATE	QQ-P-35
CRA	A-286 CRES	AMS 5525, 5726, 5731, 5732, 5734, OR 5737 (CHEMISTRY ONLY)	PASSIVATE	QQ-P-35
T	6AL-4V TITANIUM	AMS 4911, 4928, 4965, OR 4967	NONE	

THREAD T DATA

CODE	THREAD SIZE
06	.1380-32 UNC-3B
08	.1640-32 UNC-3B
3	.1900-32 UNF-3B

OPTIONAL PRIMER

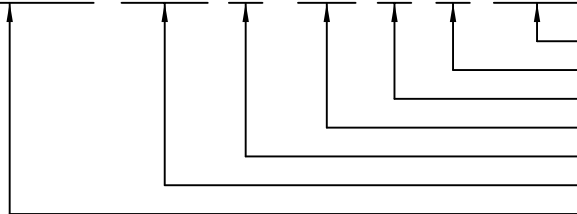
CODE	BASEPLATE PRIMER	SPEC.
P	EPOXY PRIMER	MIL-P-85582
W	FILM PRIMER	CBPS 211

THREAD T

MS21209 OR NAS1130 INSERT. INSERT INSTALLED PER MS33537. LUBE PER MIL-L-46010, TYPE 1. THREAD LOCK PER MIL-N-25027. ACCOMODATES MIL-S-8879 UNJ THREAD SCREW.

EXAMPLE PART NUMBER

CB3001 CRA 3-12 H P 750



OPTIONAL TRIMMED BASE - .750
 OPTIONAL PRIMER COATING ON BASEPLATE
 OPTIONAL INSPECTION HOLE
 STANDOFF LENGTH L - .750
 THREAD SIZE T - .1900-32 UNF-3B
 STANDOFF MATERIAL - A-286 CRES
 BASIC PART NUMBER

UNLESS OTHERWISE SPECIFIED, ALL DIMENSIONS ARE IN INCHES AND TOLERANCES ARE AS SHOWN BELOW. DIMENSIONAL TOLERANCES AND SYMBOLS PER ANSI Y14.5M-1982.

PROPRIETARY PARTS SHOWN IN THIS DRAWING ARE THE SUBJECT OF ISSUED UNITED STATES AND FOREIGN PATENTS AND PATENTS PENDING. UNAUTHORIZED REPRODUCTION AND/OR DISTRIBUTION OF THIS DRAWING IS SPECIFICALLY PROHIBITED.

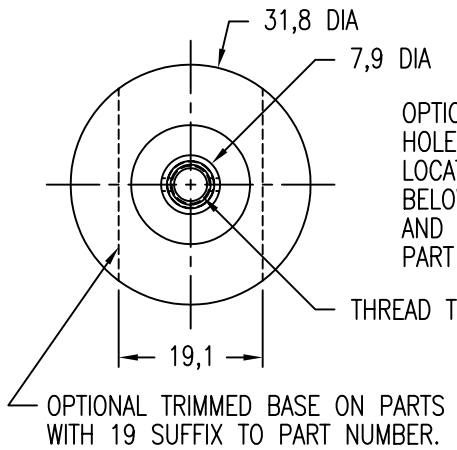


CARSON CITY
 NEVADA 89706

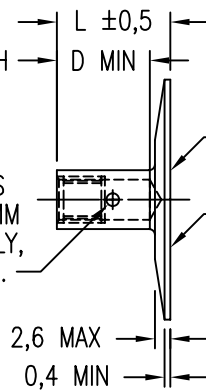
CAD CB3001-1		APPROVALS		DATE	TITLE			
ANGLES	±1°	DRAWN	DAC	24SEP99	STANDOFF, LOCKING THREAD, ADHESIVE BONDED			
.XX	±.03	CHECKED	DAC	24SEP99	SIZE	CAGE CODE	DWG. NO.	REV.
.XXX	±.010	RELEASED	CGH	30CT99	A	66530	CB3001	16
.XXXX	±.001	REVISED	DAC	24SEP99	SCALE	24SEP99		SHEET 1 OF 2

STANDOFF STRAIGHT WITHIN 0,004 MM PER MM OF LENGTH.
 PITCH DIAMETER CONCENTRIC WITH BASE O.D. WITHIN 0,5 MM FIM.
 PITCH DIAMETER PERPENDICULAR TO BASE WITHIN ±1 DEG.

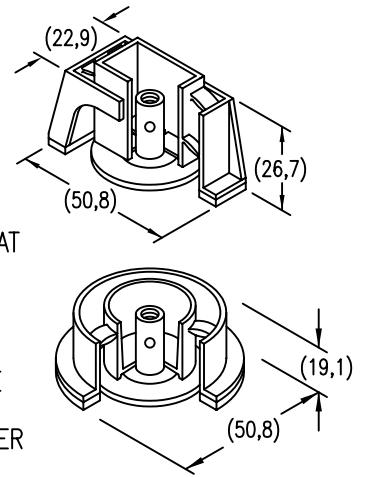
DISPOSABLE PRESSURE SENSITIVE ADHESIVE
 FIXTURE HOLDS STANDOFF WHILE ADHESIVE CURES.



OPTIONAL INSPECTION HOLE 1,5 - 1,8 DIA LOCATED 2 THD PITCHES BELOW INSERT ON 15 MM AND LONGER PARTS ONLY, PART NUMBER SUFFIX H.



STANDARD FIXTURE



FOR OPTIONAL ROUND FIXTURE ADD SUFFIX R TO PART NUMBER

LENGTH L DATA (LENGTH L IN MILLIMETERS)

CODE	10M	12M	15M	20M	25M	30M	35M
L	10	12	15	20	25	30	35
D MIN	7,5		12,3				

STANDOFF MATERIAL AND FINISH DATA

CODE	STANDOFF MATERIAL	SPEC.	FINISH	SPEC.
A	2024 OR 6061	QQ-A-200, QQ-A-225, OR QQ-A-250	NONE	
AA	ALUMINUM		ANODIZE	MIL-A-8625
CR	302, 303, 304 CRES OR A-286 CRES	AMS 5513, 5516, 5636, 5637, 5638, 5639, 5640, 5641, OR 5647 AMS 5525, 5726, 5731, 5732, 5734, OR 5737 (CHEMISTRY ONLY)	PASSIVATE	QQ-P-35
CRA	A-286 CRES	AMS 5525, 5726, 5731, 5732, 5734, OR 5737 (CHEMISTRY ONLY)	PASSIVATE	QQ-P-35
T	6AL-4V TITANIUM	AMS 4911, 4928, 4965, OR 4967	NONE	

THREAD T DATA

CODE	THREAD SIZE
3M	M3 X 0,5 4H5H
4M	M4 X 0,7 4H5H
5M	M5 X 0,8 4H5H

OPTIONAL PRIMER

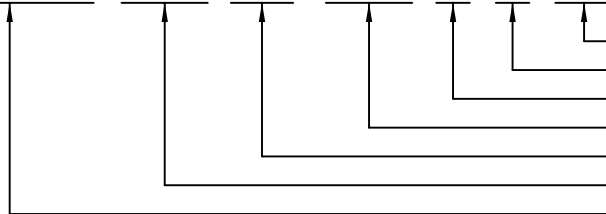
CODE	BASEPLATE PRIMER	SPEC.
P	EPOXY PRIMER	MIL-P-85582
W	FILM PRIMER	CBPS 211

THREAD T

MA3330 OR EQUIVALENT INSERT. INSERT INSTALLED PER MA1567. LUBE PER MIL-L-46010, TYPE 1. THREAD LOCK PER ISO 2320. ACCOMODATES ISO 5855 MJ THREAD SCREW.

EXAMPLE PART NUMBER

CB3001 CRA 5M 15M H P 19



OPTIONAL TRIMMED BASE - 19,1 MM
 OPTIONAL PRIMER COATING ON BASEPLATE
 OPTIONAL INSPECTION HOLE
 STANDOFF LENGTH L - 15 MM
 THREAD SIZE T - M5 X 0,8 4H5H
 STANDOFF MATERIAL - A-286 CRES
 BASIC PART NUMBER

UNLESS OTHERWISE SPECIFIED, ALL DIMENSIONS ARE IN MILLIMETERS AND TOLERANCES ARE AS SHOWN BELOW. DIMENSIONAL TOLERANCES AND SYMBOLS PER ANSI Y14.5M-1982.

PROPRIETARY PARTS SHOWN IN THIS DRAWING ARE THE SUBJECT OF ISSUED UNITED STATES AND FOREIGN PATENTS AND PATENTS PENDING. UNAUTHORIZED REPRODUCTION AND/OR DISTRIBUTION OF THIS DRAWING IS SPECIFICALLY PROHIBITED.

GLICK BOND

CARSON CITY
 NEVADA 89706

CAD CB3001-2 METRIC DIMENSIONS	
ANGLES	±1°
.X	±0,8
.XX	±0,25

APPROVALS	DATE
DRAWN DAC	24SEP99
CHECKED DAC	24SEP99
RELEASED CGH	30CT99
REVISED DAC	24SEP99

TITLE STANDOFF, LOCKING THREAD, ADHESIVE BONDED			
SIZE A	CAGE CODE 66530	DWG. NO. CB3001 (METRIC)	REV. 16
SCALE 1/1	24SEP99		SHEET 2 OF 2