

Melt Temperature Probe Series DYMT

Description

The Melt Thermocouple Series DYMT is especially designed to meet the requirements of the polymer industry. The flexible design of this series allows the use in extrusion and injection molding processes.

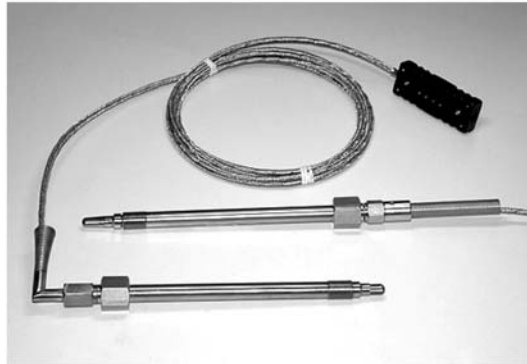
The mounting thread is compatible with the threads used for melt pressure measurement. Therefore the DYMT series is ready for use in most extrusion systems.

The blade style thermocouples feature a unique blade design which reduces the friction in the melt stream, the special rotation design of the blade allows low friction installation.

The Melt Thermocouple Series DYMT is also available with dual TC or RTD.

Features

- Rugged design
- Designed especially for the polymer industry
- 1000 bars max. pressure
- Various TC and RTD
- Flush or blade style
- Blade can be positioned in flow direction
- Various threads available
- DYNISCO pressure transducer mounting hole compatible



Technical Data / Operating Data

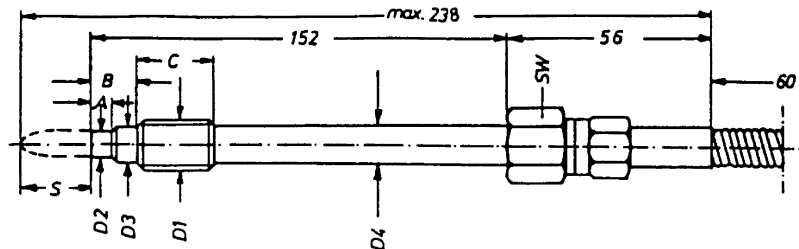
Thread	1/2"-20 UNF, M18 x 1,5 or M14 x 1,5	Blade length	2,5 - 30 mm, on request
Stem length	152mm standard, others on request	Material in contact with media	15-5 Mat.No 1.4545

Electrical Characteristics

Thermocouple	J, K, L, other types on request	Pipe Connection	Straight or 90° angled
RTD	wireable as 2-, 3- or 4-wire	Cable length	75mm, others on request
Connector	IEC-Connector for Thermocouples DIN-Connector for RTD		

Dimensions

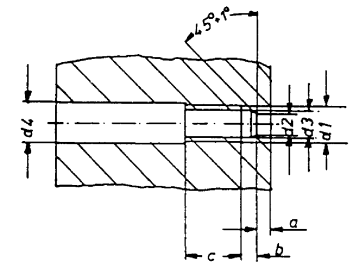
Melt Temperature Probe



D1	D2	D3	D4	A	B	C	SW
M14 x 1,5	8 ^{-0,05}	12 ^{-0,1}	12 ^{0,5}	6 ^{-0,25}	12	20	19
M18 x 1,5	10 ^{-0,05}	16 ^{-0,1}	16 ^{0,5}	6 ^{-0,25}	14	20	19
1/2-20UNF-2A	7,8 ^{-0,05}	10,5 ^{-0,05}	11 ^{-0,5}	5,3 ^{+0,25}	11	16	19

Mounting hole

D1	D2	D3	D4	A	B	C
M14 x 1,5	8,1 ^{+0,05}	12,1 ^{+0,1}	16	6,15 min.	4 max.	25
M18 x 1,5	10,1 ^{+0,05}	16,3 ^{+0,2}	20	6,15 min.	4 max.	25
1/2-20UNF-2A	7,92 ^{+0,05}	11,5 ^{+0,1}	13	5,7 min.	3,2 max.	19



Mounting instructions

Maximum mounting torque 40 Nm!

Under the following conditions:

- Avoid bending during screw into the mounting hole
- During screw out of the outer tube, avoid torsion at the inner tube.
- Before mounting, ensure that the mounting hole is free from plastic residue

Order specifications

DYMT - X - XXX - XXXXX - XX - XX - X

Type

- F** = Flush style
- S** = Blade style

Mounting Thread

- 1/2** = 1/2" 20 UNF 2A
- M14** = M14 x 1,5
- M18** = M18 x 1,5

Temperature Sensor

- J** = Thermocouple type J acc. DIN IEC 584-1
- L** = Thermocouple type L acc. DIN IEC 584-1
- K** = Thermocouple type K acc. DIN IEC 584-1
- RTD** = RTD

Pipe Connection

- G** = straight
- W** = 90° angled

Stem length

- 15** = Stem length 152 mm (standard)
- Others on request

Blade length

- 2,5-30** = 2,5 - 30 mm, on request