

Datasheet

- Position Indicator with analogue scale (I80) or rather analogue-digital scale (IN80)
- Measurement of length and angle with gravity principle
- Window of shock-proof polycarbonate
- Available for several hand wheels
- IP-Rating: IP64



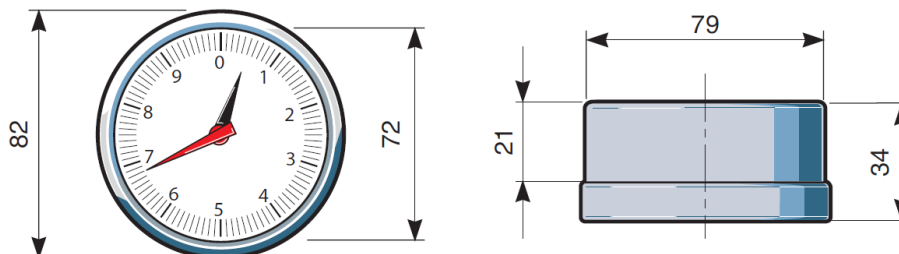
Mechanical Data

In General	
Material Case Window	Metal or Technopolymer Shock-proof polycarbonate
Counting Direction	DX clockwise SX anti-clockwise
Applications	Suitable for horizontal with up to 30° inclined position of shaft
Operating Temperature	< 80°C
IP-Rating	IP64
Optional	oil-filled on request
Accessories Hand Wheel	P90, P125, P140, P160
I80	
Indication	analogue dial scale
Hand Big Hand Little Hand	1:1 ratio with hand wheel Transmission Ratio depending on the required shaft revolution
Transmission Ratio	2:1 - 4:1 - 6:1 - 10:1 - 12:1 - 20:1 - 24:1 - 30:1 - 36:1 - 40:1 - 60:1 - 100:1 - 120:1 - 200:1
Dial Scale	0-6; 0-10; 0-12; 10-0-10; 20-0-20; 0-24; 0-25; 0-30; 0-36; 0-40; 0-50; 0-60; 0-80; 0-100
IN80	
Indication	analogue-digital dial scale, counter
Hand Big Hand Little Hand	1:1 ratio with hand wheel absolute measurement in 1mm or 0.1mm steps
Indication after 1 revolution	000 1 - 000 2 - 000 4 - 000 5 - 000 6 - 000 8 - 00 10 - 001 5 - 002 0 - 002 5 - 003 0 - 004 0 - 005 0 - 006 0
Dial Scale Division	0-10; 0-15; 0-20; 0-25; 0-30; 0-40; 0-50; 0-60; 0-80; 0-100 100

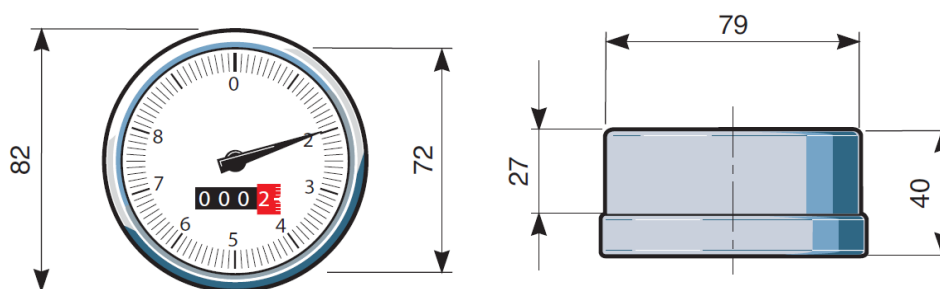
Datasheet

Dimensions

I80



IN80



Ordering Example

Type **I80** - **30** - **DX** - **1Z** - **0-30**

I80
 IN80

I80
Transmission Ratio

30 = 30:1
 For further Information, see table

IN80
Indication after 1 revolution

003 0
 For further Information, see table

Counting Direction

DX = clockwise
SX = anti-clockwise

Number of Hands

1Z = 1 hand
2Z = 2 hands

Dial Scale

0-30 = 0-30
 For further Information, see table

Assembling

- Setting shaft and display value for that position to the 0 position / starting point bringing
- Position display in the hand wheel introduce
- wheel set on the shaft
- Tighten threaded pin - ready!